
**BROOKLYN COLLEGE
ALIGNMENT OF UNIT MISSION TO COLLEGE
INSTITUTIONAL LEARNING OUTCOMES
WORKING SESSION**



SEPTEMBER 24, 2020

SESSION FACILITATOR

Michael Ayers

Senior Director,

Institutional Research and Data Analysis (IRDA)



CO-FACILITATOR

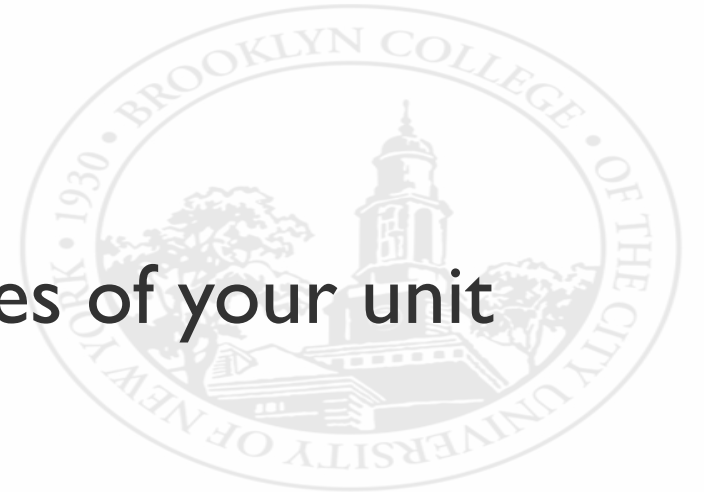
Isana Leshchinskaya

Assessment and Accreditation Specialist,
Office of Educational Research and Assessment (ERA)



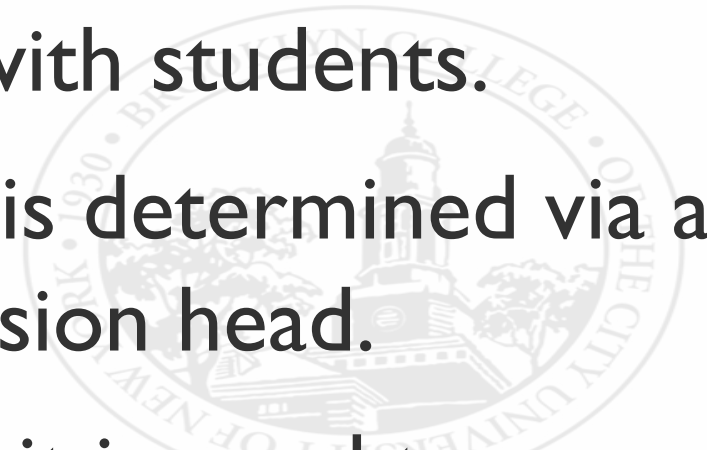
AES UNIT MISSION STATEMENT

A **broad** statement of the purpose and values of your unit



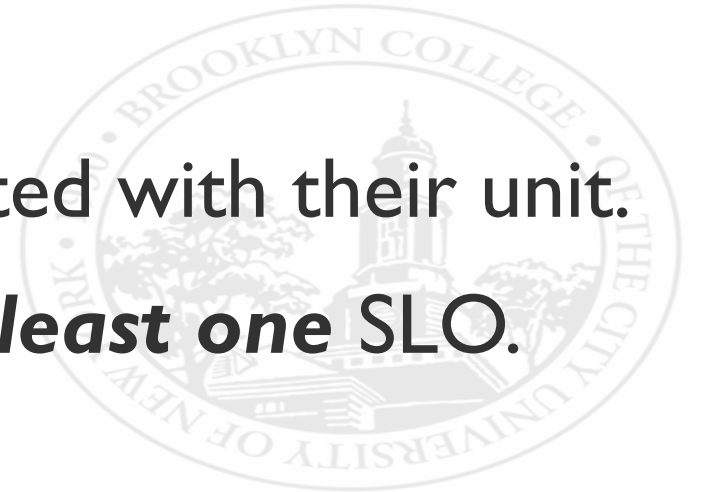
IS YOUR UNIT STUDENT-FACING?

- Many AES units interact with students in some respect.
- Some AES units never directly interact with students.
- Whether a unit is student-facing or not is determined via a discussion between the unit and the division head.
 - If a unit has some student-facing traits, it is good to err on the side of it being student-facing



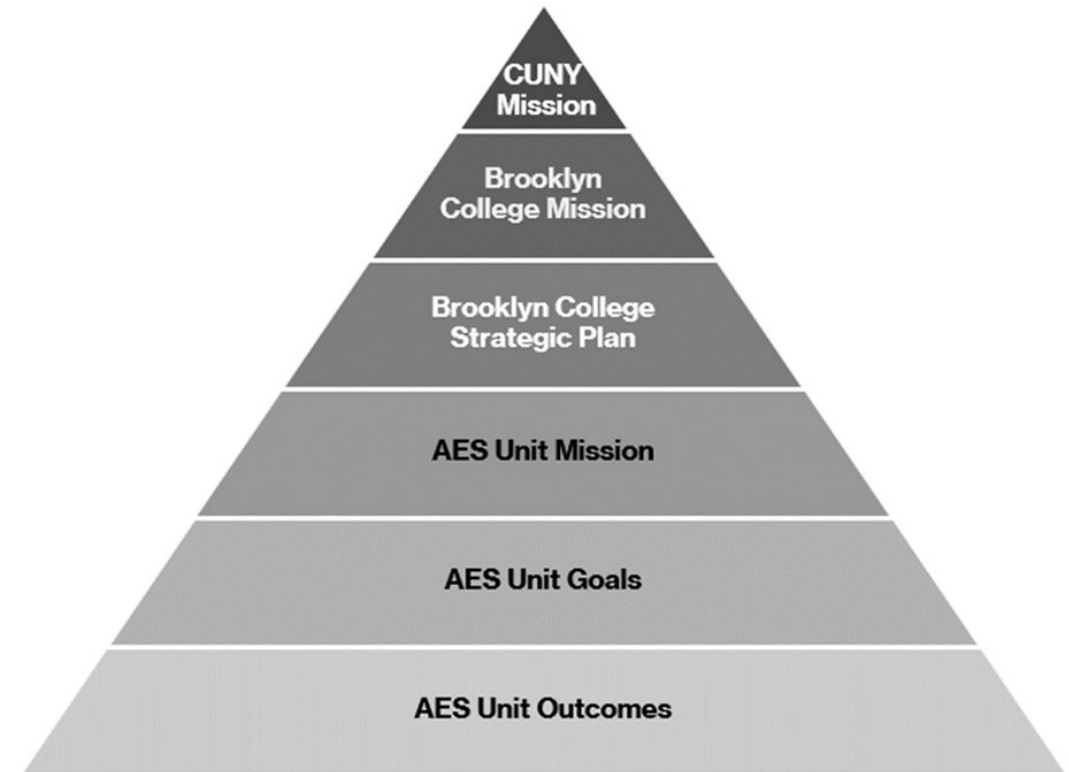
STUDENT-FACING UNIT ASSESSMENT RESPONSIBILITIES

- These units are responsible for assessing:
 - Administrative outcomes
 - Student learning outcomes (SLOs) associated with their unit.
 - All student-facing AES units must have ***at least one*** SLO.



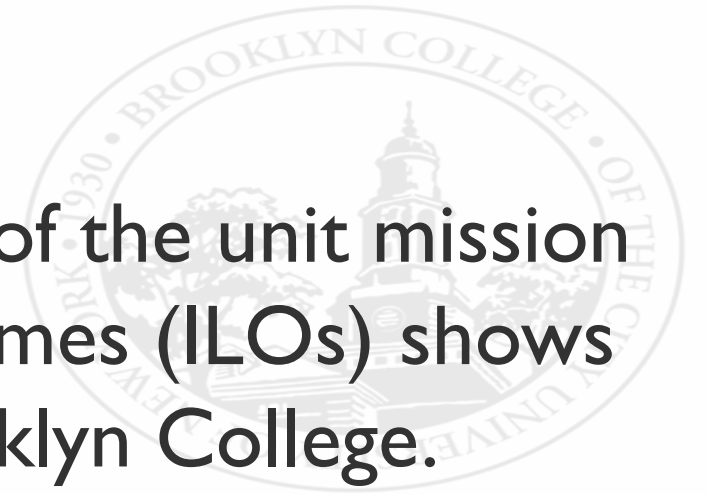
WHY DO WE ALIGN?

- AES Units support the mission, goals, and outcomes of Brooklyn College
- This can be illustrated by an alignment (or mapping) of the unit mission to the College mission, to the College Strategic Plan Objectives, and to the College ILOs



WHY DO WE ALIGN? (CONT'D)

- For units that are student-facing, alignment of the unit mission to the College Institutional Learning Outcomes (ILOs) shows how units support student learning at Brooklyn College.



ALIGNMENT TO THE BROOKLYN COLLEGE ILOS

THE BROOKLYN COLLEGE INSTITUTIONAL LEARNING OUTCOMES (ILOS)

Our students will learn to:

- Think critically and creatively
- Effectively express their thoughts
- Make sound ethical judgments
- Integrate knowledge from diverse sources
- Become informed and responsible citizens of the world



UNIT MISSION ALIGNMENT TO THE ILOS

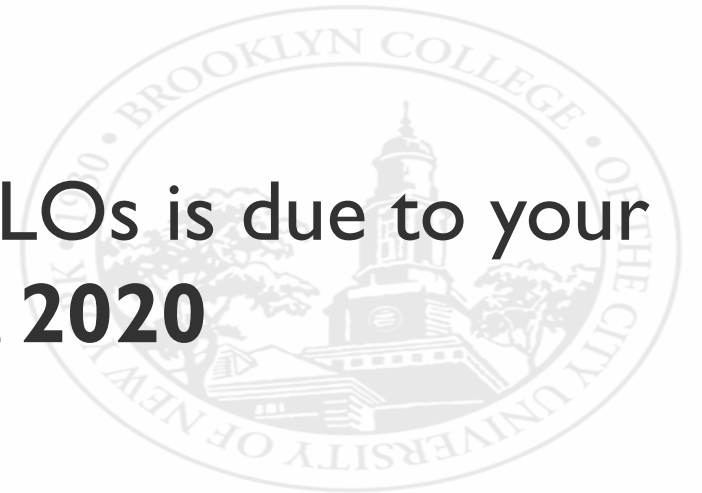
- Student-facing units' missions must align with ***at least one*** ILO.



DUE DATE:

ALIGNMENT OF UNIT MISSION TO COLLEGE ILOS

Alignment of your unit mission to the College ILOs is due to your
AES Council Representative on **October 30th, 2020**



SAMPLE ALIGNMENT

Sample alignment of the Learning Center mission to the College ILOs

Unit Mission Statement	Think critically and creatively	Effectively express their thoughts	Make sound ethical judgments	Integrate knowledge from diverse sources	Become an informed and responsible citizen of the world
The Brooklyn College Learning Center (LC) provides peer tutoring and utilizes national best practices that allow students to achieve their academic goals.	X	X	X	X	X
Academically, we meet students where they are, and take them where they want to be. With support from the Office of Institutional Research, the LC designs relevant interventions for need areas.	X	X		X	
Empowering students to cultivate the skills and behaviors of confident, independent, and lifelong learners, the LC furthers Brooklyn College's focus on student-driven learning, and increased retention and graduation rates.	X	X		X	X




ALIGNMENT STEPS

Step 1. Divide your unit mission statement into sections.

The Brooklyn College Learning Center (LC) provides peer tutoring and utilizes national best practices that allow students to achieve their academic goals. Academically, we meet students where they are, and take them where they want to be. With support from the Office of Institutional Research, the LC designs relevant interventions for need areas. Empowering students to cultivate the skills and behaviors of confident, independent, and lifelong learners, the LC furthers Brooklyn College's focus on student-driven learning, and increased retention and graduation rates.

ALIGNMENT STEPS

Step 2. Input mission statement into alignment table

Unit Mission Statement	Think critically and creatively	Effectively express their thoughts	Make sound ethical judgments	Integrate knowledge from diverse sources	Become an informed and responsible citizen of the world
The Brooklyn College Learning Center (LC) provides peer tutoring and utilizes national best practices that allow students to achieve their academic goals.					
Academically, we meet students where they are, and take them where they want to be. With support from the Office of Institutional Research, the LC designs relevant interventions for need areas.					
Empowering students to cultivate the skills and behaviors of confident, independent, and lifelong learners, the LC furthers Brooklyn College's focus on student-driven learning, and increased retention and graduation rates.					

ALIGNMENT STEPS

Step 3. Indicate how each statement aligns to the College ILOs by marking with an "X".

Unit Mission Statement	Think critically and creatively	Effectively express their thoughts	Make sound ethical judgments	Integrate knowledge from diverse sources	Become an informed and responsible citizen of the world
The Brooklyn College Learning Center (LC) provides peer tutoring and utilizes national best practices that allow students to achieve their academic goals.	X	X	X	X	X
Academically, we meet students where they are, and take them where they want to be. With support from the Office of Institutional Research, the LC designs relevant interventions for need areas.	X	X		X	
Empowering students to cultivate the skills and behaviors of confident, independent, and lifelong learners, the LC furthers Brooklyn College's focus on student-driven learning, and increased retention and graduation rates.	X	X		X	X

WALKTHROUGH

Indicate how the statement aligns to the College ILOs by marking with an "X".

Unit Mission Statement	Think critically and creatively	Effectively express their thoughts	Make sound ethical judgments	Integrate knowledge from diverse sources	Become an informed and responsible citizen of the world
Empowering students to cultivate the skills and behaviors of confident, independent, and lifelong learners, the LC furthers Brooklyn College's focus on student-driven learning, and increased retention and graduation rates.	X	X		X	X

WORK ON THE ALIGNMENT – BREAKOUT SESSION

Please indicate how each statement part aligns to each ILO by marking with an "X"

Unit Mission Statement	Think critically and creatively	Effectively express their thoughts	Make sound ethical judgments	Integrate knowledge from diverse sources	Become an informed and responsible citizen of the world
Unit Mission Statement Part 1: <i>List statement part in full.</i>					
Unit Mission Statement Part 2: <i>List statement part in full.</i>					

REPORT OUT



QUESTIONS & ANSWERS



UPCOMING WORKING SESSIONS

- **September 24th 12 pm – 1 pm:** Unit Values/Purpose Alignment to the College Mission (Non-Student-Facing Units)
- **October 1st 11 am – 1 pm:** Alignment of Unit Goals/Outcomes to the College Strategic Plan Objectives
- **October 8th 11 am – 1 pm:** Detailed AES Assessment Planning Document
- **Early November (date & time TBD):** Annual Assessment Report Training Session

AES ASSESSMENT RESOURCES

Assessment Resources

■ ERA:

brooklyn.cuny.edu/IE/assessment

■ AES:

brooklyn.cuny.edu/IE/aes-assessment



The screenshot displays the Brooklyn College website's navigation and sidebar. The top navigation bar includes links for ABOUT, ACADEMICS, ADMISSIONS, CAMPUS LIFE, NEWS & MEDIA, ATHLETICS, and SUPPORT BC. Below this is the Brooklyn College logo and a search bar. A secondary navigation bar features links for BC WebCentral, We Stand Against Hate, Calendar, Offices and Services, Library, Career Services, Honors Academy, and Special Programs. A dropdown menu is open, showing options for Prospective Students, Current Students, Faculty & Staff, and Alumni & Friends. The main content area features a large image of faculty members in a workshop, with the caption "Faculty participating in an assessment workshop". To the right, a sidebar titled "STATEMENTS AND MESSAGES" lists various offices, with the "OFFICE OF THE ASSOCIATE PROVOST FOR INSTITUTIONAL EFFECTIVENESS" highlighted in yellow. Other items in the sidebar include "Our Team", "Educational Research and Assessment", "Accreditation", "Brooklyn College Data", "Institutional Research and Data Analysis", "Survey Services", and "Data Dashboard".

HAVE ADDITIONAL QUESTIONS? YOUR DIVISION'S AES COUNCIL REPRESENTATIVE:

Academic Affairs:

- Lucas G. Rubin, LRubin@Brooklyn.cuny.edu
- Richard Vento, RVento@Brooklyn.cuny.edu

Enrollment Management & Retention:

- Estefania Ponti, Estefania.Ponti@Brooklyn.cuny.edu



HAVE ADDITIONAL QUESTIONS? YOUR DIVISION'S AES COUNCIL REPRESENTATIVE:

Finance & Administration:

- Marcus Richardson, MRichardson@Brooklyn.cuny.edu

Institutional Advancement:

- Bronwyn Cunningham, Bronwyn.Cunningham@Brooklyn.cuny.edu

Student Affairs:

- David Wells, DWells@Brooklyn.cuny.edu



FOR ADDITIONAL SUPPORT:

- Contact ERA at Isana.Leshchinskaya@Brooklyn.cuny.edu

Or

- Drop in via Zoom to Fall 2020 Assessment Office Hours

Tuesdays, 1-3 pm from September 22 – December 22

<https://brooklyncollege.zoom.us/j/99547613462?pwd=amIUMXZ4WkhPaURQME8lYTdsNlplzd09>

THANK YOU

